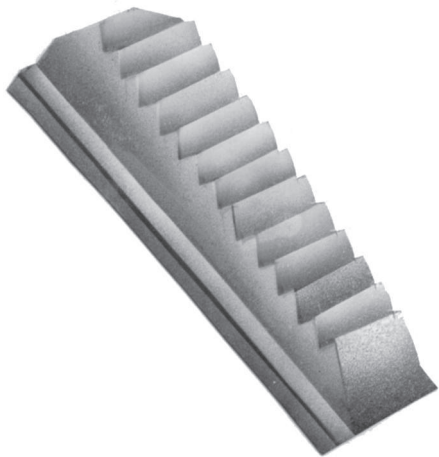


MORDENTES PARA COLAR DE SEGURANÇA BAASH ROSS TIPOS "T" & "C"

DIES FOR SAFETY COLLAR BAASH ROSS MODELS "T" & "C"

DIÂMETRO DO TUBO TUBE DIAMETER	REF. VALMAN VALMAN REF.	N.P. ORIGINAL ORIGINAL P/N	QUANTIDADE POR TIPO QUANTITY FOR TYPE				PESO (Kg) WEIGHT (Kg)	
			T	CR	CL	CXL		
1.1/8" - 2"	VBR-213	7624-A-21	4				0,180	
2.1/8" - 3.1/4"			5					
3.1/4" - 4.1/2"			6					
3.3/4" - 4.5/8"	VBR-214	7624-A-4		7			0,270	
4.1/2" - 5.5/8"				8				
5.1/2" - 6.5/8"				9				
6.1/2" - 7.5/8"				10				
7.1/2" - 8.5/8"				11				
8.1/2" - 9.5/8"				12				
9.1/2" - 10.5/8"				13				
10.1/2" - 11.5/8"						14		
11.1/2" - 12.5/8"						15		
12.1/2" - 13.5/8"						16		
13.1/2" - 14.5/8"						17		
14.1/2" - 15.5/8"						18		
15.1/2" - 15.5/8"								18
16.1/2" - 18"								19
17.1/2" - 19"								20
18.1/2" - 20"					21			
19.1/2" - 21"					22			



TYPE "T"



TYPE "C"